






## Tailor (Darzi)

NG-2.5-AP-00739-2023-V1-AMHSSC

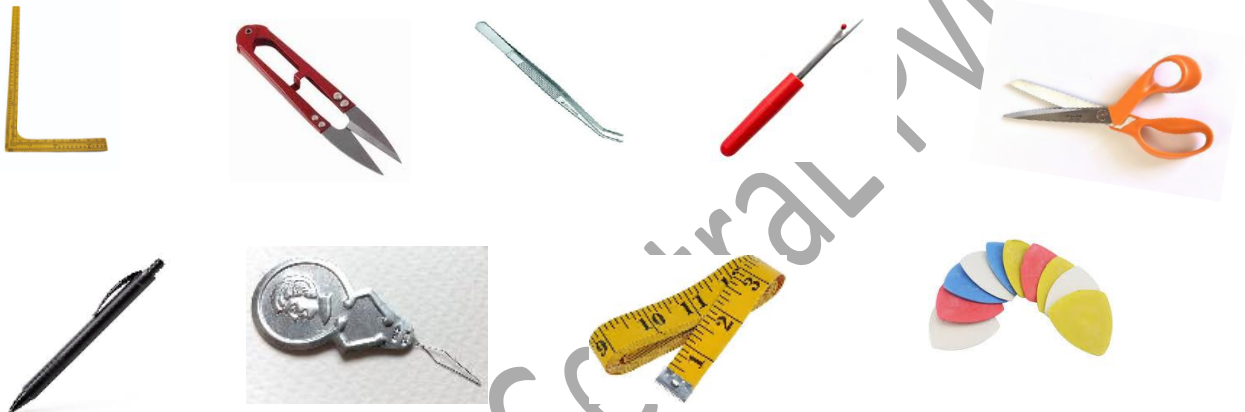
### I. Upskilling on working with the listed modern Tool- kit for Tailor (Darzi) to perform operations using modern tools

#### 1. State whether True or False

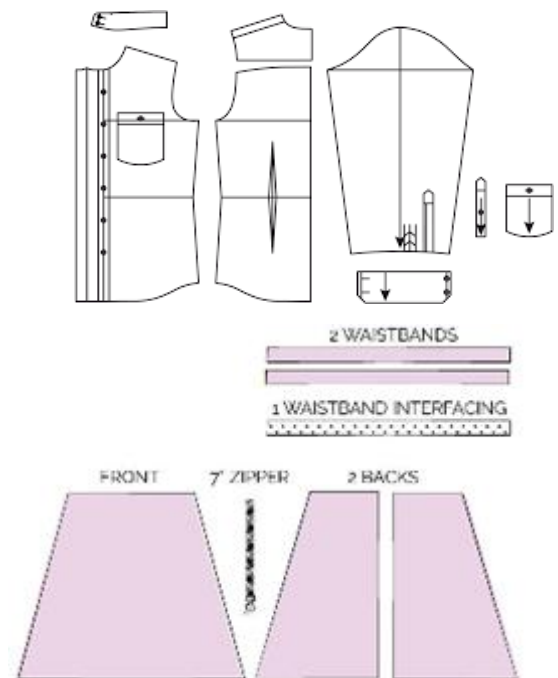
Sl No	Question	Option A	Option B	Marks	ANS
1.	 <p>Is the posture correct while working at the sewing machine?</p>	YES	NO	2	B
2	 <p>In the picture, is the sewing machine safe to operate?</p>	True	False	2	A
3	 <p>This is the tool used to remove stitches</p>	True	False	2	A
4.	 <p>This part of the sewing machine holds, pulls and moves the fabric while sewing.</p>	True	False	2	A

5	 <p>Too much sewing thread tension can cause this error.</p>	True	False	2	A
---	---	------	-------	---	---

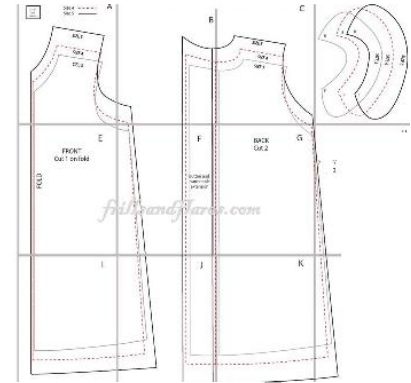
2. Tick the tools used for sewing.



3. Match the following dresses with their patterns



Tailor (Darzi)



## II. Digital Literacy

### 1. Match the



following features of a smart phone

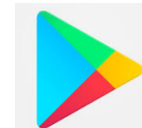
1. Cloud storage

2. Play Store

3. Messages

4. File Manager

5. Security



## 2. Compare the following features of a smart phone applications

1. Payment App



2. Web browser



3. Instant voice and video messaging



4. Large file sharing platform



5. Digital imaging software



## 3. State whether True or False

1. The safest practice is to use the same password for multiple accounts. (T/F)
2. Connecting to public Wi-Fi networks can expose your personal data to hackers. (T/F)
3. Regularly updating your Smartphone operating system and apps helps protect against security breaches. (T/F)
4. It is safe to click on any link received via email or text message, as mobile devices are resistant to malware. (T/F)
5. Phishing attacks can also occur via email, text messages and phone calls. (T/F)

### III. Self Employment

#### 1. Choose the correct answer

SI No	Question	Option A	Option B	Option C	Option D	ANS
1.	Which of the following is an example of self-employment in custom tailoring?	Running a clothing store	Designing and sewing dress	Making ready-to-wear garments in a factory	Selling sewing machines and accessories	B
2	What is the first step in creating a business plan?	Determine your business location	Define your business goals and objectives	Hire employees	Purchase things	B
3	What is the key element of a marketing plan in a business plan?	Detailed cost analysis	Sales forecasts	Strategies to reach target customers	Legal Advisors	C
4.	Which strategy helps in efficient utilization of raw materials?	Ordering materials only when out of stock	Implementing just-in-time (JIT) inventory management	Buying in bulk without considering storage	Using the cheapest materials available	A
5.	What is the key factor in maintaining the quality of products and services?	Reducing production costs	Implementing quality control processes	Delaying product delivery times	Reducing staff training programs	B
6.	Which government scheme aims to provide collateral-free loans to micro and small enterprises in India?	Pradhan Mantri Kaushal Vikas Yojana (PMKVY)	Pradhan Mantri Mudra Yojana (PMMY)	Atal Pension Yojana (APY)	Swachh Bharat Abhiyan	B